

[SOURCE NEEDED]

Time

**Diagnoses are delayed where
specialists don't exist.**

neuramed.

Clinical intelligence,
equally distributed.

three agents. one system.

Voice listens, imaging sees, OCR reads — in parallel.



listens



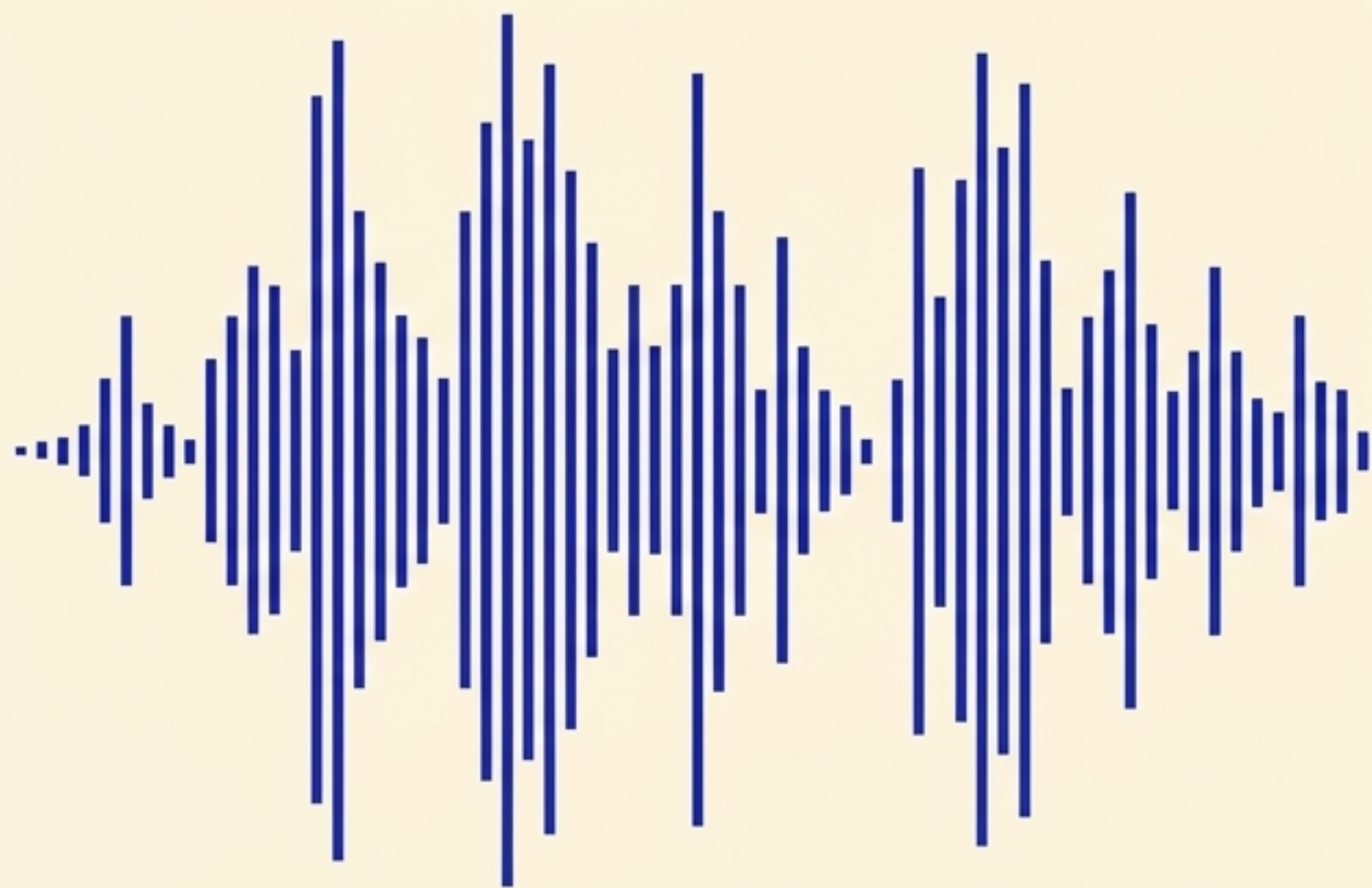
sees



reads

Speak. get a diagnosis.

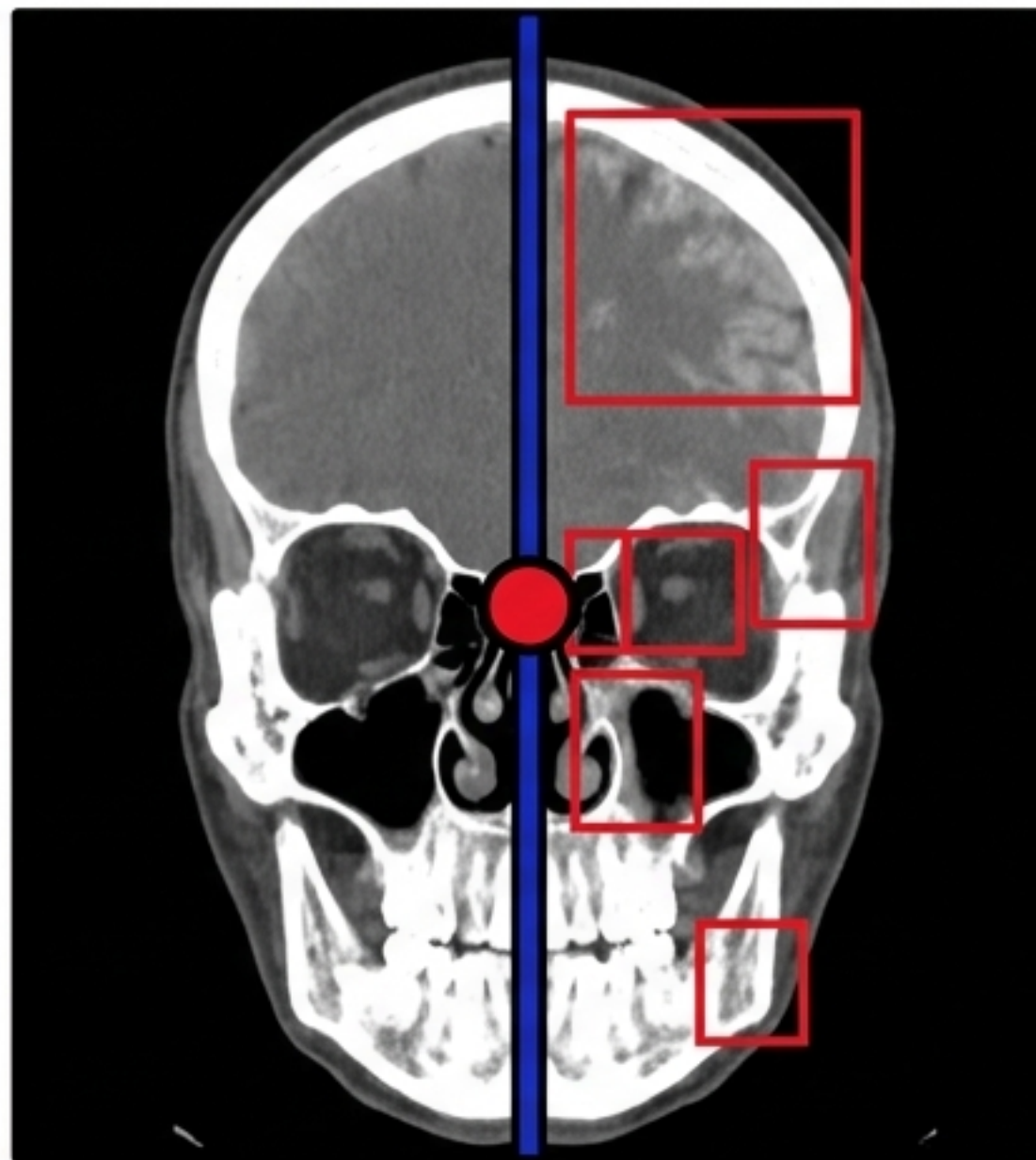
Nine input languages, one structured clinical output, under 2s. [SOURCE NEEDED]



```
{  
  "PATIENT_ID": "891-2B",  
  "SYMPTOM_01": "COUGH_PERSISTENT",  
  "SYMPTOM_02": "CHEST_TIGHTNESS",  
  "URGENCY": "HIGH",  
  "PRELIM_DIAG": "ACUTE_RESP_INFECTION"  
}
```

the model never goes blank.

ACR-graded findings, fallback chain active, zero null returns.
[SOURCE NEEDED]



five nouns. one stack.

Every layer chosen for speed, not comfort.

FASTAPI

GROQ

WEBSOCKET

REACT

THREE.JS

**End-to-end latency — voice input
to structured diagnostic output.**

1.4s

neuramed.

Clinical intelligence,
equally distributed.